

HOUSTON

IP65 PREMIUM LED FLOOD LIGHT

GF400

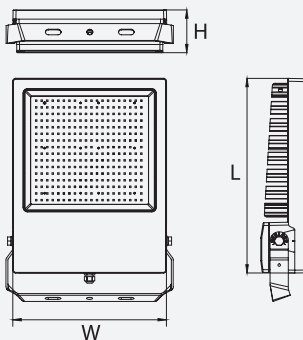


FEATURES

- Die-cast aluminium housing
- Forged aluminium heat sink
- Tempered glass cover
- Adjustable bracket for light positioning
- LED lifespan: 50000 Hours @ L70, Ta 25°C
- Ta: -20°C to +40°C



DIMENSION



OPTIONS

Wire Guard



Glare Cover



Pole Mounting Bracket

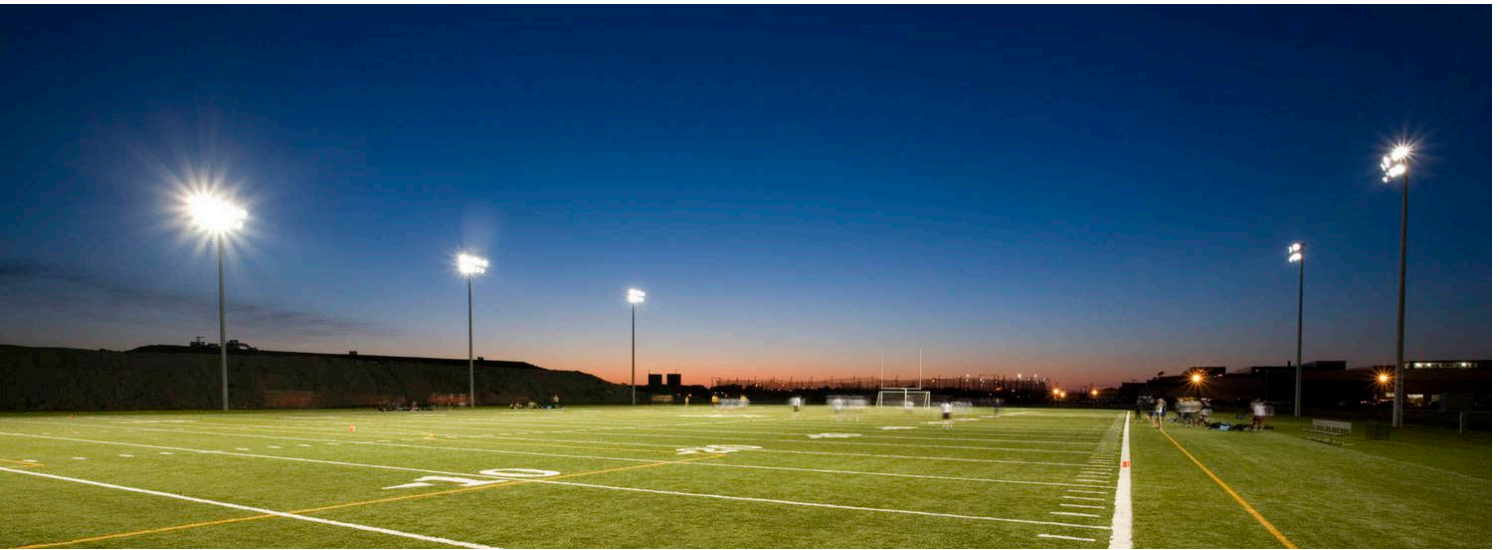


Tenon Mounting Bracket



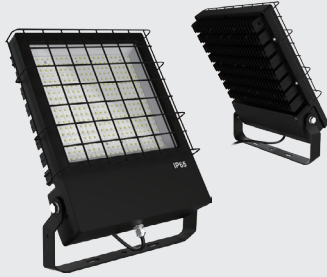
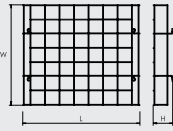
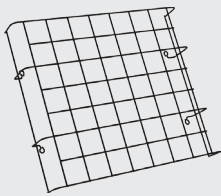
TECHNICAL SPECIFICATIONS

MODEL NO.	INPUT VOLTAGE (V)	POWER (W)	LUMEN (lm)	COLOUR TEMPERATURE (K)	CRI	BEAM ANGLE (°)	DIMENSIONS (LxWxH) (mm)	NET WEIGHT (Kg)	FITTING COLOUR
GF400/200 DL	230	200	25000	5000	>82	110	411 x 319 x 90	7.8	Black
GF400/240 DL	230	240	30000	5000	>82	110	411 x 319 x 90	8	Black



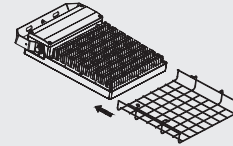
ACCESSORIES

Wire Guard

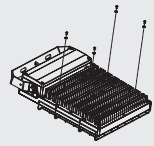


INSTALLATION INSTRUCTION

①

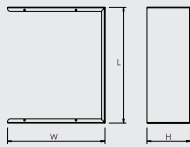


②



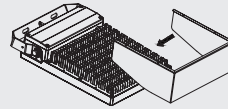
MODEL NO.	FITTING COLOUR	WEIGHT (g)	DIMENSIONS (LxWxH) (mm)
GF400/WG	Black	230	343 x 293 x 57

Glare Cover

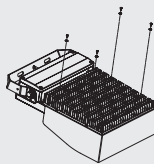


INSTALLATION INSTRUCTION

①

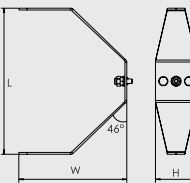


②



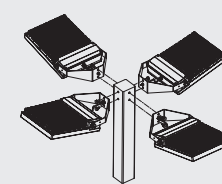
MODEL NO.	FITTING COLOUR	WEIGHT (g)	DIMENSIONS (LxWxH) (mm)
GF400/GC	Black	665	323 x 272 x 121

Pole Mounting Bracket

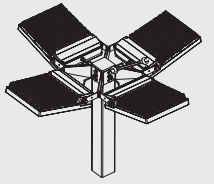


INSTALLATION INSTRUCTION

①

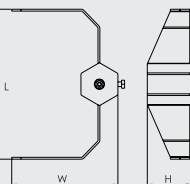
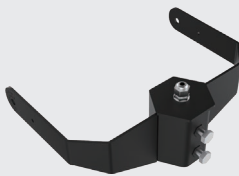


②



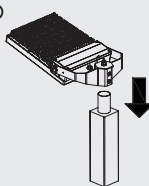
MODEL NO.	FITTING COLOUR	WEIGHT (g)	DIMENSIONS (LxWxH) (mm)
GF400/PMB	Black	1280	322 x 235 x 90

Tenon Mounting Bracket

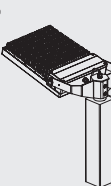


INSTALLATION INSTRUCTION

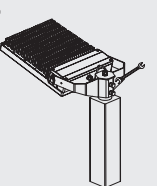
①



②



③



MODEL NO.	FITTING COLOUR	WEIGHT (g)	DIMENSIONS (LxWxH) (mm)
GF400/TMB	Black	2100	322 x 230 x 96

ⓘ Specifications above are for reference only and may vary without prior notice