



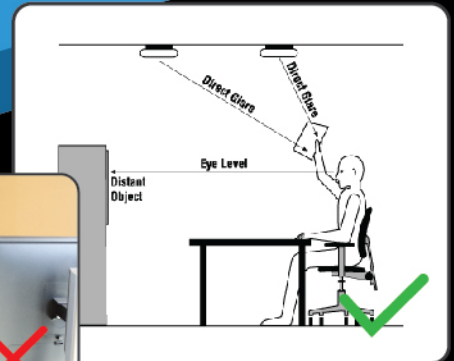
NSG TRADING LTD

Designed in New Zealand for New Zealand

BENTLEY INDIRECT LED TROFFER



GTF4105 Ceiling recess luminaire for indirect lighting Best suitable for work environment with no direct glare from the luminaire.



With good quality LED chip and driver there is no ripple effect from the luminaire, this provides a soothing ambient lighting.

It is easy to install as it is a direct replacement to a ceiling tile of either 1200mm x 300mm or 600mm x 600mm dimension.

Each light fitting is supplied with a flux and plug connection, additional tool for quick installation.



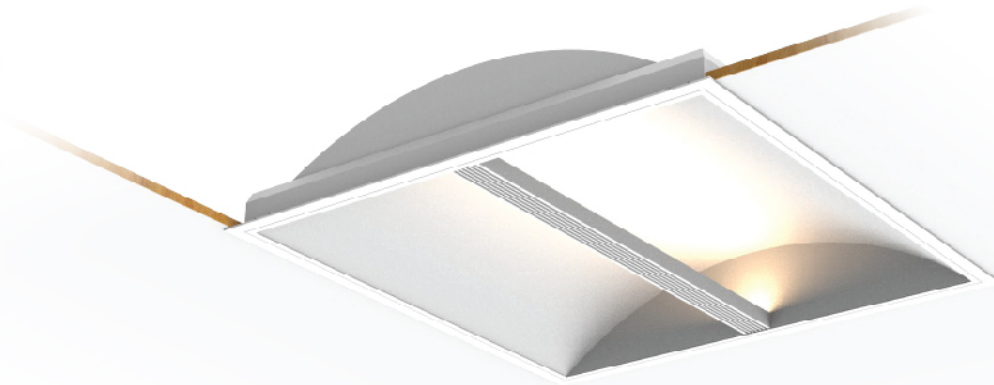
www.nsglighting.co.nz



BENTLEY

INDIRECT LED TROFFER

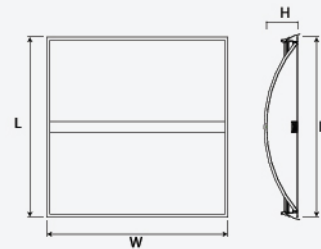
GTF4105



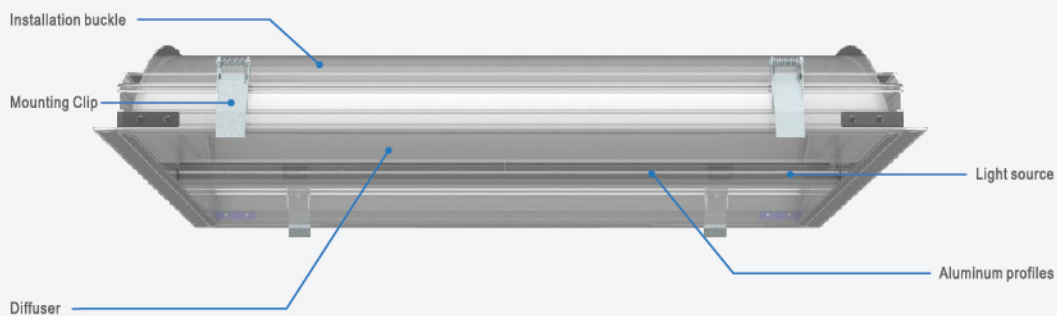
FEATURES

- High quality steel sheet housing and aluminium frame
- Electrostatic thermo-painting finish
- Arc reflector
- Constant current LED driver included
- Standard metric T-Bar ceiling recessed installation
- Lifespan: 50,000 Hours @ L70, Ta 25°C
- Ta: -20 to +40°C

DIMENSION



EXPLODED DRAWING



TECHNICAL SPECIFICATIONS

MODEL NO.	INPUT VOLTAGE (V)	POWER (W)	LUMEN (lm)	COLOUR TEMPERATURE (K)	BEAM ANGLE (°)	DIMENSIONS (LxWxH) (mm)	FITTING COLOUR	CARTON QUANTITY
GTF4105/066 CW	230	36	3400	4000	90	598 x 598 x 80	White	1
GTF4105/123 CW	230	36	3400	4000	90	298 x 1198 x 80	White	1

① Specifications above are for reference only and may vary without prior notice