

Designed in New Zealand for New Zealand

UNI-FIT COB LED MODULE



**EASY
INSTALL**

GDL843

Uni-fit lamp is a retrofit lamp to replace the conventional halogen lamp.

Due to their size, which is similar to the dichoric lamp, they could fit into existing frames making it easy to install without extra civil works and there- by an economical retrofit solution.



They could also be used in new builds and not worry about replacing the entire fitting, like other LED fittings available in the market, in case of failures or replacement after the warranted lamp life.

Uni-fit lamps come in different colour temperatures, 3000k, 4000k and 5700k. With over 80 CRI, the lamp in 8w and 60 degree beam angle is mainly used for general / ambient lighting purposes.

Additionally the lamp is supplied with a pre-wired trailing edge dimmer. They are quicker and easier to install using the Flex and Plug supplied along with the fitting which makes it one of the most suited products for residences.



UNI-FIT

COB LED MODULE

GDL843

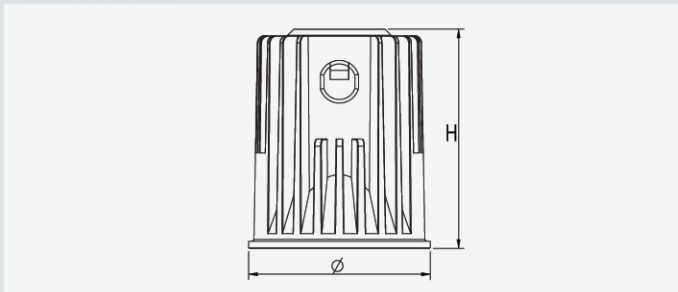


FEATURES

- Die-cast aluminium heat sink
- Powder coated finish
- LED trailing edge dimmable driver included, pre-wired
- Quick connect plug between driver and fitting
- LED lifespan: 50000 Hours @L70, Ta 25°C
- Ta: -20°C to +40°C



DIMENSION



OPTIONS

- DIMMING:
 - Analogue dimming (1~10V)
 - Digital dimming (DSI, DALI)
- CRI>95
- Compatible fittings

TECHNICAL SPECIFICATIONS

MODEL NO.	INPUT VOLTAGE (V)	POWER (W)	LUMEN (lm)	COLOUR TEMPERATURE (K)	BEAM ANGLE (°)	DIMENSIONS (Ø×H)	FITTING COLOUR	CARTON QUANTITY
GDL843 WW	230	8	700	3000	60	50 x 61	Silver	60
GDL843 CW	230	8	800	4000	60	50 x 61	Silver	60
GDL843 DL	230	8	800	5700	60	50 x 61	Silver	60

Specifications above are for reference only and may vary without prior notice



UNI-FIT FITTINGS

FIXED/TILTABLE/GIMBLE RECESSED DOWNLIGHT FRAME

S9001 / S9002 / S9003



S9001



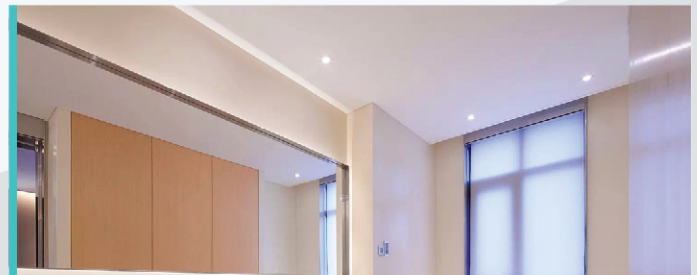
S9002



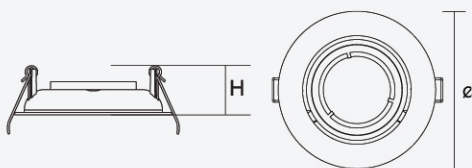
S9003

FEATURES

- Die-cast aluminium body
- Powder coated finish
- To be used with: UNIFIT GDL843 WW, GDL843 CW or GDL843 DL



DIMENSION



SATIN CHROME



S9001

S9002

S9003

TECHNICAL SPECIFICATIONS

MODEL NO.	HEAD	DIMENSIONS (Ø×H) (mm)	CUT OUT SIZE (Ø) (mm)	FITTING COLOUR	CARTON QUANTITY
S9001WH	Fixed head	81 x 32	72	White	50
S9001SC	Fixed head	81 x 32	72	Satin Chrome	50
S9002WH	Centre tilt 30°	95 x 32	80	White	50
S9002SC	Centre tilt 30°	95 x 32	80	Satin Chrome	50
S9003WH	Gimble 45°	103 x 36	92	White	50
S9003SC	Gimble 45°	103 x 36	92	Satin Chrome	50

① Specifications above are for reference only and may vary without prior notice